

CERTIFICATE OF LOCATION OF GOVERNMENT CORNER

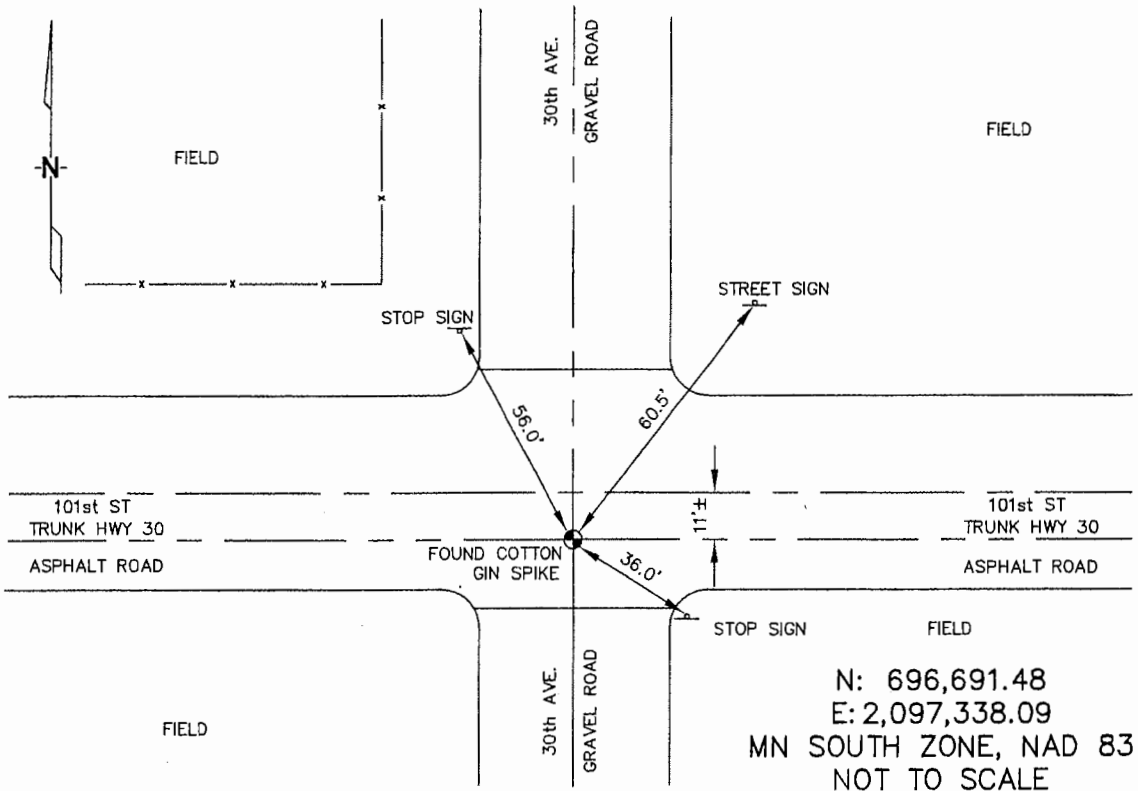
NORTHWEST Corner of Section 15, Township 106N, Range 43W, 5TH P.M.

STATE OF MINNESOTA, County of MURRAY

At the corner location shown on the sketch :

- On 3/22/2006 found A "COTTON GIN SPIKE" IN C/L OF 30th AV
& 11'± SOUTH FROM C/L OF T.H. 30.
 - left monument as found, lowered monument, removed monument (explain)
- On _____ set _____

Sketch of reference ties



Statement of evidence relative to this corner location is on back page

I hereby certify that this document and the data contained herein was prepared by me or under my direct supervision.

Thomas V. Zeff 5/22/06
 Thomas V. Zeff Date
 Registration No. 44563

- Land Surveyor, Professional Engineer
- County Surveyor, County Engineer

OFFICE OF THE COUNTY RECORDER

County of _____

SEP 28 2006

I hereby certify that this document was filed in the Co. Recorders office at _____ M. on the day of _____ A.D., 20

County Recorder James V. Johnson
 By _____, Deputy

DOCUMENT NO. _____

STATEMENT OF EVIDENCE:

NORTHWEST CORNER, SECTION 15, T. 106 N., R. 43 W.,
MURRAY COUNTY, MINNESOTA

- 1866 J.W. Bishop, US. Deputy Surveyor, monumented corner.
- ? Date MN DOT R/W Map for Trunk Highway 30, calls for the corner to be 9.4' south from T.H. C/L POT. Sta. 799+03.4 tats. the trunk highway (east and west) and the road (north & south).
- 3/22/2006 Ulteig Engineers, Inc., Survey Crew, Dennis Lavallie Party Chief, found a "cotton gin spike" in the C/L of 30th Ave. & 11'± south from the C/L of Trunk Highway 30.
Ties: NE-60.5' to steel post of Street Sign;
SE-36.0' to steel post of Stop Sign;
NW-56.0' to steel post of Stop Sign.